

Infusing AI in healthcare:

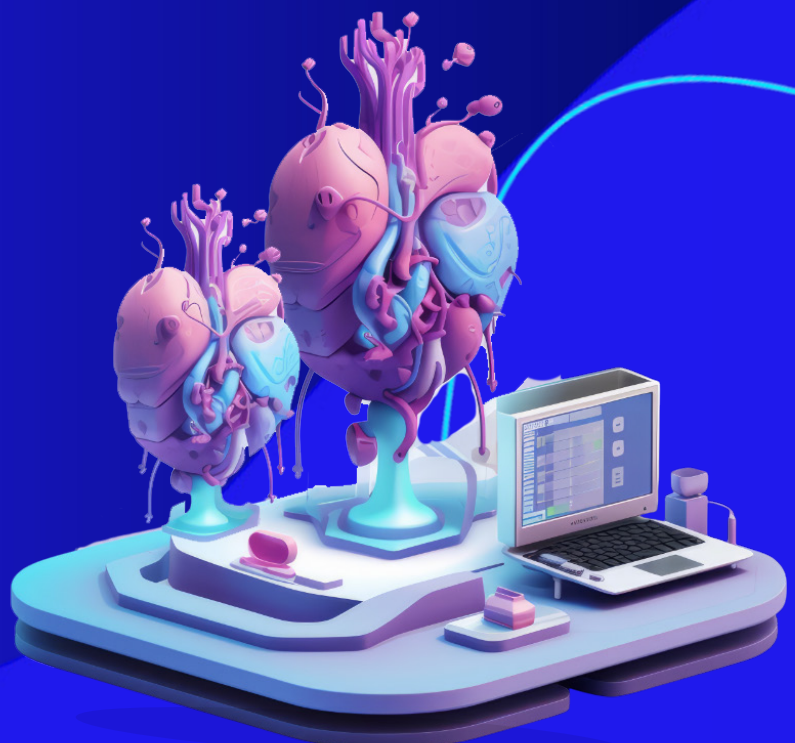
Challenges, realities, and future prospects

**Deepesh Hansrajani**

AVP & Principal Architect,
MedTech Market, CitiusTech

Abstract

AI and GenAI are transforming healthcare, offering improvements in diagnostics, workflows, and patient care. While these technologies have great potential, the implementation challenges, such as regulatory compliance, workflow disruption, and talent shortages, can't be ignored. This paper highlights the importance of strategic integration, with a focus on the seamless embedding of AI into existing systems. It covers some real-world applications and shares how organizations can leverage these technologies with a user-centric design approach, regulatory alignment, and proactive integration to enhance the healthcare ecosystem.



Content

Introduction	3
The current landscape of AI in healthcare	4
Infusing AI into healthcare systems	5
Challenges in implementation	6
Real-world applications	7
The future of GenAI in healthcare	7
The way forward	9
References	9

Introduction

Healthcare, one of the most vital industries in the world, has always been slow to embrace disruptive technologies. Yet, AI and GenAI are beginning to break that inertia, promising transformative changes across clinical workflows, patient care, and operational systems. A study at Kaiser Permanente Northern California found that [AI algorithms surpassed the traditional clinical risk model](#) in predicting the five-year likelihood of breast cancer.⁽¹⁾ This reflects the enormous potential of these technologies.

The future of healthcare hinges on our ability to harness these advanced technologies and fundamentally enhance care delivery. By embedding the capabilities of AI and generative AI into healthcare systems, we can tackle critical issues like physician fatigue and care personalization while driving outcomes that were previously out of reach. For instance, McKinsey [reports](#) that 59% of healthcare organizations that are implementing GenAI are already developing customized solutions.⁽²⁾ The challenge now is in seamlessly integrating it into the fabric of healthcare to truly transform patient and provider experiences.



The current landscape of AI in healthcare

AI has steadily gained traction in healthcare, demonstrating its ability to enhance clinical precision and streamline workflows. Key areas of impact include:

- **Medical imaging and diagnostics**

AI's ability to analyze complex datasets is transforming diagnostics. AI-powered tools in medical imaging are now capable of identifying anomalies with unmatched precision and speed. For instance, these systems can detect subtle patterns in radiology scans that might elude even the most experienced human eye. Additionally, in life sciences, AI is drastically cutting down research and drug discovery timelines, enabling faster interventions for critical diseases.

- **Precision in surgery: AI and Robotics**

Surgical advancements gain steam through AI-driven robotics. AI supports surgeons through preoperative planning, intraoperative guidance, and robotic assistance during procedures. By integrating real-time data into the surgical process, AI enhances precision and reduces risks, leading to faster recoveries and improved patient outcomes. For example, AI systems assist in mapping critical surgical paths, allowing surgeons to operate with greater confidence and accuracy.

- **Operational excellence through AI automation**

AI is tackling one of healthcare's most significant challenges: administrative inefficiencies. Tools like automated appointment scheduling and automation in claims submission & processing along with other RCM operations are reducing the administrative burden on healthcare providers. AI is streamlining processes like resource allocation and patient intake systems, ensuring better utilization of time and resources. In emergency settings, AI predictive models help hospitals manage capacity and plan for patient surges more effectively.

GenAI, though still in its early stages, is set to revolutionize healthcare further. In fact, the healthcare industry's [nature](#)⁽³⁾ comprising manual, knowledge-heavy, and text-heavy tasks, is especially well suited to leveraging GenAI to improve efficiency and quality of care. Capabilities such as generating actionable insights, summarizing clinical notes, and enhancing personalized care are opening new frontiers for innovation.

Infusing AI into healthcare systems

AI's true value lies in its ability to be infused seamlessly into existing healthcare workflows, delivering tremendous benefits by enhancing efficiency without disrupting user experiences.

Examples include:

- **AI in drug discovery and research:**

AI accelerates drug discovery by analyzing vast datasets to identify potential drug candidates and predict their efficacy. Notably, AI has been used in the [development of 164 investigational drugs and 1 approved drug](#),^[4] with machine learning and deep learning being the most frequent AI techniques employed.

- **AI in the surgical lifecycle:**

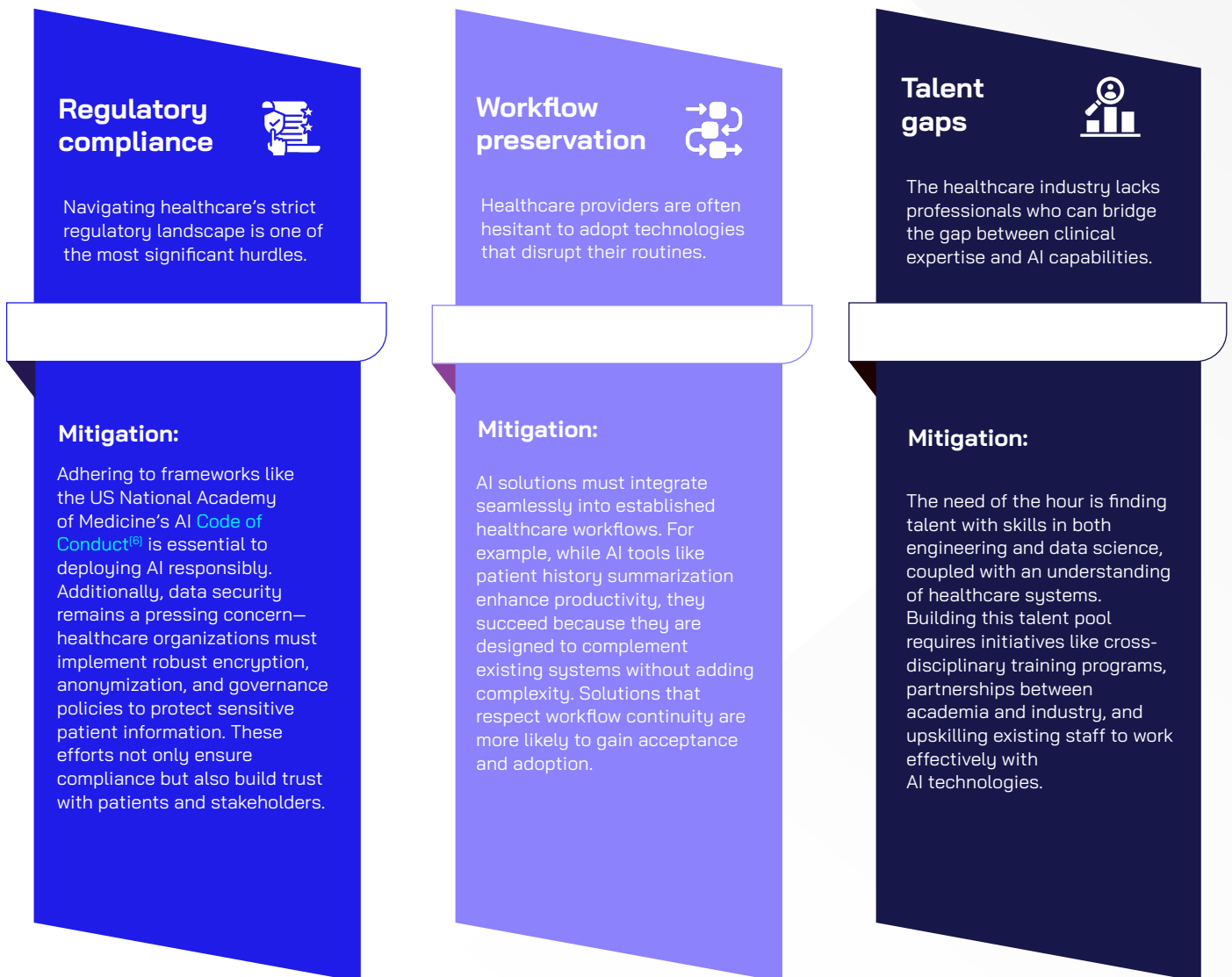
AI is revolutionizing surgery by enhancing precision and patient outcomes throughout the surgical process. Advances in AI have enabled the [application of predictive analytics in various surgical settings](#),^[5] including optimizing care in intensive care units and high-intensity environments like trauma bays.

Infusing AI into healthcare systems ensures that these technologies complement existing workflows rather than disrupting them. This approach minimizes resistance from healthcare professionals while maximizing efficiency and usability. By embedding AI into the core fabric of healthcare operations, organizations can create systems that are more intuitive, adaptive, and patient-focused, setting the foundation for broader adoption and innovation.



Challenges in implementation

While AI and GenAI have the potential to transform the healthcare industry, their integration comes with several challenges that need careful planning and execution. Some of these challenges include:



By addressing these challenges early in the design phase with a “shift left” approach, healthcare organizations can streamline implementation and accelerate adoption.

Real-world applications

The integration of AI into healthcare systems is already yielding tangible results. GenAI is [believed^{\(2\)}](#) to have the highest potential value in improving clinician productivity, patient engagement and experience, and quality of care.

Here are notable real-world applications that demonstrate how AI can significantly improve both clinical and operational outcomes.

1. Enhanced physician productivity

GenAI is transforming physician productivity by streamlining interactions with EMR/EHR systems. Tools now provide concise summaries of patient histories, reducing the need for clinicians to navigate through multiple screens and Subjective, Objective, Assessment and Plan (SOAP) notes. Achieving this seamless functionality requires developing APIs to expose the right data, ensuring the AI model has the proper context for accurate outputs. This integration allows physicians to focus on patient conversations rather than administrative tasks, enhancing both patient experience and clinical efficiency while significantly improving diagnosis and treatment outcomes.

2. AI in connected devices

AI-enabled connected devices are enhancing patient monitoring by creating a more integrated ecosystem in acute care settings like ICUs, operating rooms, and wards. These environments often have multiple devices generating vast telemetry and clinical data, which can be challenging to process manually. By deploying AI on edge devices, clinicians can analyze this data in real-time and get actionable insights for optimizing treatment and proactive decision-making, improving both care quality and efficiency.

The future of GenAI in healthcare

As GenAI continues to evolve, its potential applications in healthcare are expanding, paving the way for a more personalized, efficient, and predictive care model. Deep integration into core healthcare workflows is poised to drive some of the most transformative changes in the coming years.

Key areas of impact include:

- **Personalized care**

AI tools will enable healthcare providers to craft treatment plans tailored to individual patients by analyzing real-time data and patient history. This shift toward truly personalized medicine will enhance patient outcomes.

- **Clinical decision support**

AI has the potential to significantly reduce the cognitive burden on healthcare providers. By providing actionable insights at critical decision points, these tools can amplify accuracy and speed, improving both patient care and provider efficiency.

- **Accelerated research & development**

In drug discovery and clinical research, AI-driven simulations and data analysis are expected to significantly shorten timelines and reduce costs. These advancements will allow for faster treatment development and innovative therapies.

The future of healthcare will be defined by how well GenAI integrates with core workflows to create systems that are not only efficient but also patient-centric. From low-hanging fruit like co-pilots to large-scale implementation in commercial and operational roles, healthcare organizations that pilot GenAI projects are already [starting^{\(7\)}](#) to gain productivity benefits and are set for more in the years to come.



The way forward

AI and generative AI promise outcomes that were once out of reach, but realizing their full potential requires more than innovation. Seamless integration, regulatory alignment, and a commitment to user-centric design are essential for success. By embedding AI into every layer of healthcare, the industry can shift from reactive care to proactive, personalized solutions that enhance both patient and provider experiences.

The vision of a more intelligent healthcare system is attainable, with AI and GenAI serving as catalysts for this transformation, enabling healthcare organizations to deliver better care when and where it's most needed.



References

1. Comparison of mammography AI algorithms with a clinical risk model for 5-year breast cancer risk prediction ([rsna.org](https://www.rsna.org))
2. Generative AI in healthcare: Adoption trends and what's next ([mckinsey.com](https://www.mckinsey.com))
3. The future of digital health 2024 ([bcg.com](https://www.bcg.com))
4. Use of artificial intelligence in drug development ([jamanetwork.com](https://www.jamanetwork.com))
5. Predictive analytics and artificial intelligence in surgery - opportunities and risks ([jamanetwork.com](https://www.jamanetwork.com))
6. AI in healthcare: Buckle up for change, but read this before takeoff ([weforum.org](https://www.weforum.org))
7. What to expect from medtech in 2024 ([mckinsey.com](https://www.mckinsey.com))



Shaping Healthcare Possibilities

CitiusTech is a global IT services, consulting, and business solutions enterprise 100% focused on the healthcare and life sciences industry. We enable 140+ enterprises to build a human-first ecosystem that is efficient, effective, and equitable with deep domain expertise and next-gen technology.

With over 8,500 healthcare technology professionals worldwide, CitiusTech powers healthcare digital innovation, business transformation and industry-wide convergence through next-generation technologies, solutions, and products.

www.citiustech.com

Shaping Healthcare Possibilities

